

LEAD WITH **VISION**,
IMPACT WITH **PURPOSE**.



LEAD THE FUTURE OF EDUCATION

Are you ready to become a transformative leader in the rapidly changing world of education?

The online MA Education Leadership programme at UWE Bristol equips you with the skills and knowledge to navigate the complexities of the modern educational landscape, from leading diverse teams to implementing evidence-based strategies for improvement in educational contexts.

Content

- Who is this programme for?
- Why UWE Bristol?
- Programme structure
- Meet your programme leader
- Skills development
- VLE and collaborative learning model
- Assessment
- Tuition fees
- Entry requirements
- Application success

**MA Education Leadership
(online)**

Prospectus 2025/26

Who is this programme for?

This programme is designed for those working in or towards leadership roles in education. Leaders who are eager to:

Advance their careers:

Whether you're a teacher, administrator, policymaker or moving into the area of education, developing your leadership knowledge and skills within the educational context equips you to be a successful education leader.

Use an evidence-based approach:

Develop skills in critical thinking, decision-making, evidence-based practice and reflection, building your confidence in your ability to be a leader in education.

Make a real impact:

Leaders in education play a crucial role in shaping the learning environment, inspiring students and staff, and fostering a culture of excellence. This programme will empower you to make a meaningful difference in your education organisation.



**MA Education Leadership
(online)**

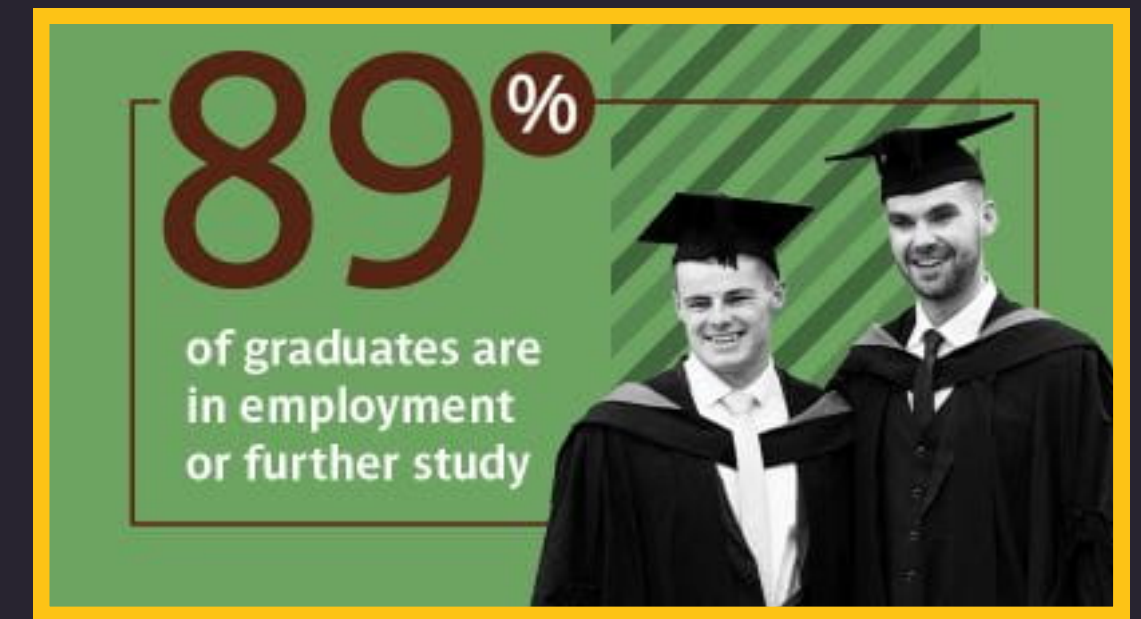
Prospectus 2025/26

Why UWE Bristol?

Your launchpad for education leadership

UWE Bristol is a thriving, modern university with a rich history of academic excellence and a strong reputation for producing highly employable graduates. We are proud to hold a **gold rating for student experience** in the Teaching Excellence Framework (TEF).

Our strong links with the sector ensure that our programmes are relevant and up-to-date, reflecting the latest challenges in the field of education.



Unlock your potential with online study

Balance your studies with your work and personal commitments, without sacrificing the quality of your education.

**UWE
Bristol**

Flexibility

Our **100% online format** gives you the freedom to study at your own pace. You can design a study schedule that suits you. Tuition is also paid on a per-module basis, allowing payments to be spread out across your programme.

Mobility

Your programme is in your pocket. Your programme travels with you as you **study a-synchronously** from the device of your choice from anywhere in the world. **Enjoy 24/7 access** through your Virtual Learning Environment.

Expert Faculty

Our programmes are **designed by experienced educators** and leaders who are passionate about making a difference. **Benefit from their insights**, guidance, and support.

Support

Develop your knowledge with 24/7 access to the **UWE Bristol online library service**. When needed, you can also get 24/7 support from the **mental health helpline**.

Community

Connect with a **diverse network of learners** and experts from around the world through engaging discussion forums and get opportunities to participate beyond the course in wider discussions/debates.

Programme structure

Your pathway to education leadership

The MA Education Leadership (online) programme is a two-year, part-time degree designed to fit seamlessly into your professional life. Through a blend of theoretical grounding, practical application, and reflective practice, you'll gain the expertise to lead and transform educational institutions.

Core Modules: Building your skills toolkit

Each of the eight compulsory modules is 15 credits and is carefully crafted to build upon your existing knowledge and skills, ensuring a logical progression throughout the programme.

Educational Enquiry: Your final project

You'll undertake an educational enquiry worth 60 credits, applying your knowledge and skills to evaluate and explore a real-world educational leadership issue in your own work context.



CORE MODULES

Explore your online modules designed for in-demand skills

The programme has a total of 180 credits. You take eight core modules; each is worth 15 credits and is an average of eight weeks in duration. The journey of discovery begins with the Personal Leadership module and ends with your 60-credit Educational Enquiry project.

**UWE
Bristol**



Core Module

MA Education Leadership (online)
15 credits

Personal Leadership

Develop the self-awareness and interpersonal skills essential for effective leadership in educational settings. Explore leadership styles, strengths, values, and communication strategies to enhance your ability to lead yourself and others with confidence and integrity.

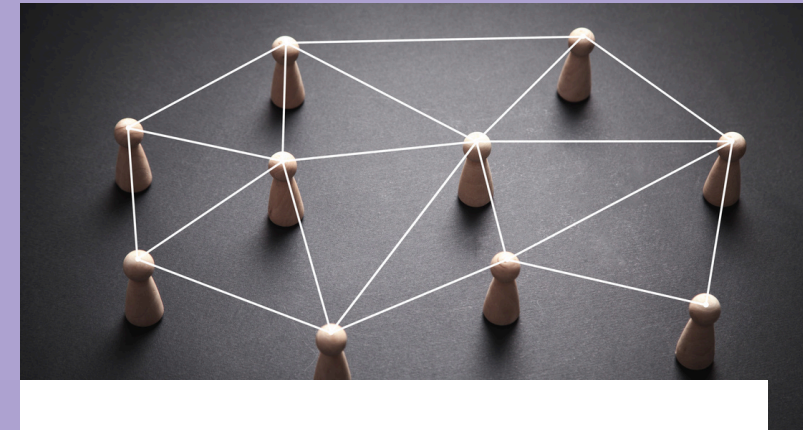


Core Module

MA Education Leadership (online)
15 credits

Debates and Innovation in Education Leadership

Explore contemporary debates and innovations shaping the future of leadership in education. Critically analyse emerging trends, challenge assumptions, and develop a strategic mindset to drive positive change and transform learning experiences within your educational context.

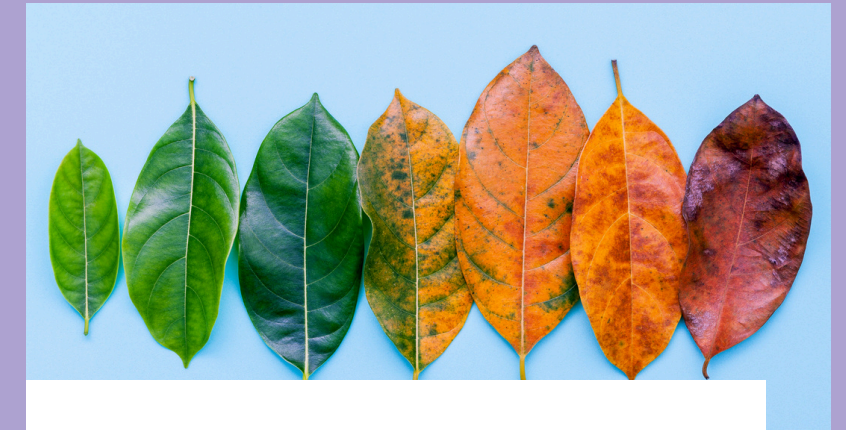


Core Module

MA Education Leadership (online)
15 credits

Developing Individuals and Teams

Empower individuals and teams to reach their full potential within your educational environment. Master strategies for personal development, coaching, mentoring, conflict resolution, and cultivate a collaborative and supportive learning atmosphere designed for collective success.



Core Module

MA Education Leadership (online)
15 credits

Change and Influence in Education Leadership

Master the dynamics of change and become an influential leader in education settings. Analyse drivers of change, design effective strategies, overcome barriers, measure impact, and enhance your personal influence to drive positive transformation.

CORE MODULES

Continued



Core Module

MA Education Leadership (online)
15 credits

Education Policy and Practice

Explore the complex interplay between education policy and practice, critically analyse the development, implementation, and impact of policies on diverse stakeholders. Examine strategies to address equity and inclusion while evaluating policy effectiveness within various educational settings.

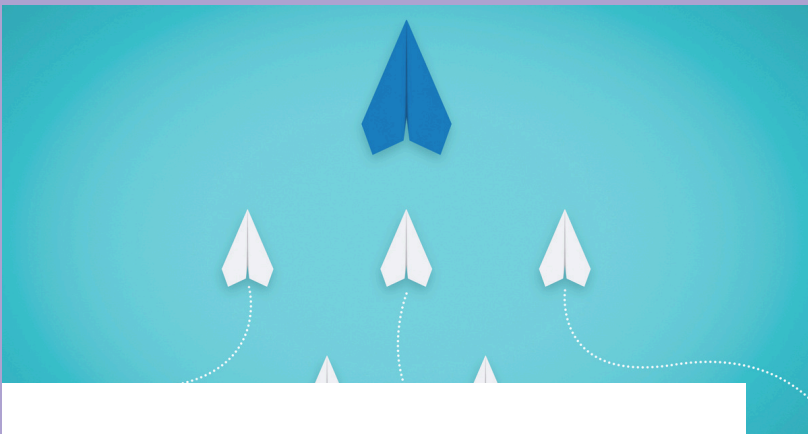


Core Module

MA Education Leadership (online)
15 credits

Evidence-based Education Leadership in Practice

Develop the skills to make informed, data-driven decisions that improve educational outcomes. Explore various sources of evidence, learn to evaluate and apply data ethically, and create evidence-based strategies to address organisational challenges within your educational setting.



Core Module

MA Education Leadership (online)
15 credits

Leadership of Complex Education Systems

Master the art of leading within complex educational systems. Develop strategies for navigating uncertainty, fostering innovation, and making ethical, data-driven decisions to drive success in a dynamic and interconnected educational landscape.



Core Module

MA Education Leadership (online)
15 credits

Organisational Cultures in Education

Develop the skills to analyse and shape a positive organisational culture. Explore leadership behaviours, ethics, and social justice as they relate to culture, and learn to evaluate culture effectively for continuous improvement.

Meet your programme leader

MA Education Leadership (online)

Dr Paul Redford

**UWE
Bristol**

- **Qualifications:** DPhil, MSc, BA(Hons), CPsychol, SFHEA
- **Position:** Associate Professor
- **Department:** ACE - Education and Childhood

About me

I am an Associate Professor, a Chartered Psychologist, member of the British Psychological Society (BPS) and a Senior Fellow of the Higher Education Academy (SFHEA). I specialise in the enablers of positive learning, which promote engagement and positive psychological experiences such as creativity, growth, confidence, optimism and well-being.

I am particularly interested in the factors that can enable individuals to flourish in learning environments, and help teams and organisations foster cultures that promote personal and professional learning and growth.



Skill development

Real-world application

You will learn how to immediately apply what you have learnt in your own context through the development of practical tools. Whether you are leading change, evaluating impact, or fostering a positive culture, the skills you gain in this programme will empower you to make a difference in the lives of those you influence.

Personal and professional growth

The MA Education Leadership (online) programme goes beyond leadership skills. It also fosters personal growth and self-awareness, helping you develop critical thinking, problem-solving, and decision-making skills that are essential for success in any educational leadership role.

By the end of this programme, you'll be equipped with a powerful combination of skills that are in high demand across industries. You'll be ready to take on the challenges in the world of education leadership and drive innovation in your organisation.



Key skills you'll develop

Empower your educational leadership expertise

Strategic Leadership

Develop and implement effective strategies to improve education outcomes, foster a positive organisational culture, and address complex challenges.

Communication and Collaboration

Build strong relationships with stakeholders, communicate effectively across diverse groups, and foster collaboration to achieve shared goals.

Change Management

Lead and manage change initiatives, overcoming barriers and ensuring successful implementation of new programmes or policies.

Data-Informed Decision-Making

Utilise data to inform decision-making, evaluate programme effectiveness, and identify areas for improvement in your organisation.

Ethical Leadership

Lead with integrity, promote equity and inclusion, and create a positive and supportive learning environment for all students and staff.

The Virtual Learning Environment (VLE)

Your digital campus, your global classroom

At UWE Bristol, we've created a dynamic and engaging virtual learning environment (VLE) that brings the classroom to you, wherever you are in the world. Our VLE, powered by Blackboard Ultra, is designed to facilitate seamless online learning, collaboration, and connection.

Blackboard Ultra: Your learning hub

Blackboard Ultra is more than just a platform; it's your personalised learning hub. Access course materials, engage in discussions, submit assignments, and connect with your peers and instructors, all in one convenient location. With features like:

Interactive content: Engage with multimedia learning materials, including videos and quizzes.

Discussion forums: Share ideas, ask questions, and collaborate with your peers in a vibrant online community.

24/7 access: Study at your own pace, anytime and anywhere, from any device.



Collaborative learning

Building a community of education leadership professionals

We believe that learning is a social activity. That's why we've designed our programme to **foster collaboration and interaction** among students and faculty. Through group projects, peer feedback, and online discussions, you'll build relationships with fellow professionals from around the world, **expanding your network** and gaining valuable insights from diverse perspectives.

Case study approach: Bridging theory and practice

Our programme emphasises the practical application of educational leadership theory and concepts. Through engaging **case studies based on real-world scenarios**, you'll develop the skills to analyse complex challenges, propose solutions, and make informed decisions. This approach bridges the gap between academia and the sector, preparing you for the real-world demands of a career in education leadership. Your learning journey is our priority. At UWE Bristol Online, we're committed to providing you with a supportive and **engaging online learning experience** that empowers you to achieve your goals.



Assessment methods

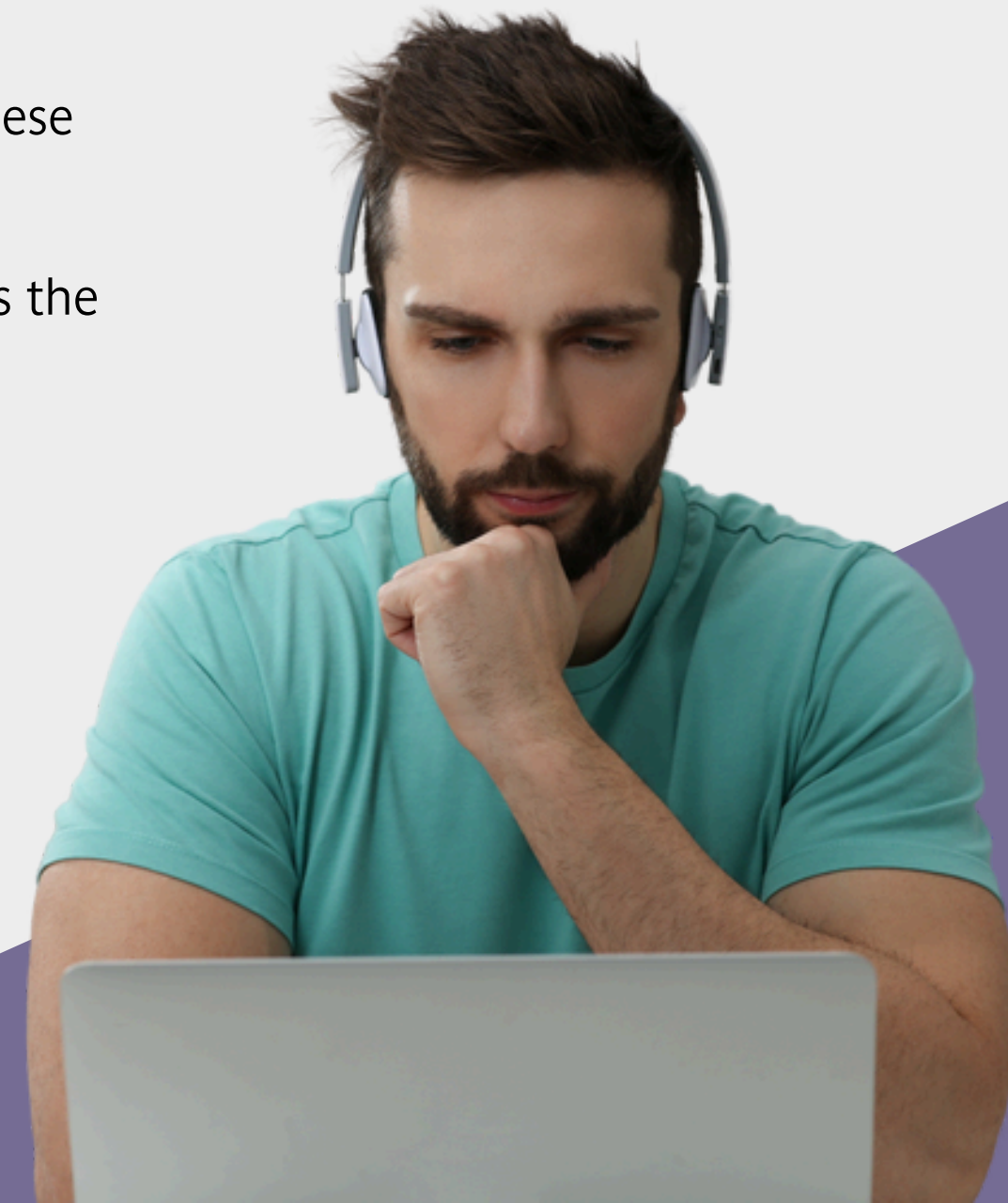
The programme uses a **variety of methods** to gauge your understanding of education theory, leadership principles, and your ability to apply them in real-world education settings. These methods include:

Self and peer reflections - to give you insight into your own authentic approach to leadership, understand the impact you have on others and support your personal development. These include action plans, records of engagement, personal and peer reflections.

Written work - allowing you to synthesise complex educational issues and research and summarise complex issues and debates for a wide audience. These include reflective essays and blog style written pieces.

Reports and analyses - use evidence from a range of sources to gain insight and develop recommendations. These include policy evaluations, culture assessments and change analyses.

Education Enquiry project - a substantial project that allows you to demonstrate to apply the skills learnt across the degree.



Formative and summative assessment

Throughout the programme, you'll receive both formative and summative assessments.

Formative assessments: These are ongoing assessments designed to provide feedback and guide your learning. They may include quizzes, discussions, or short assignments.

Summative assessments: These occur at the end of modules and evaluate your overall understanding of the material. They contribute to your final grade and determine your successful completion of the programme.

Alignment with learning outcomes

Each assessment is carefully aligned with the specific learning outcomes of the programme. This ensures that the assessments accurately measure your achievement of the programme's goals and prepare you for success in your education leadership career.

The assessments are designed to develop the critical thinking, problem-solving, and communication skills that are highly valued by those seeking leaders in education.

Tuition fees

The fee for this programme is £7,150. You pay £715 per module and £1,430 for the final project.

Fees are paid on a modular basis over the duration of the two-year course. The balance for the current module needs to be paid before being able to register for the next module. For your convenience, invoices will be issued as near as possible to the start of each module. UK students pay by credit or debit and international students through our official online payment partner, Flywire.

UK (home) students may be eligible for UK postgraduate student loan assistance. Students who receive this funding need to complete the course within two years, otherwise payments will be interrupted or stopped. Find out more about postgraduate funding.

Scholarships and financial aid

We are committed to supporting individuals in pursuing their studies. Please consult with the Student Success Team for the latest information on tuition fees.

UK-based students may be entitled to a Postgraduate Master's Loan: [gov.uk/masters-loan](https://www.gov.uk/masters-loan).



Entry requirements

To be considered for the MA Education Leadership (online) programme, you should have:

A minimum of a 2:2 Honours degree or equivalent.

If you do not meet the above requirements but have **at least 12-months relevant professional experience** and/ or equivalent qualifications, we will consider your application on a case-by-case basis.

English language requirement

International and EU applicants are required to have a minimum overall IELTS (Academic) score of 6.5 with no component below 5.5 (or approved equivalent*).

*The university accepts a large number of UK and International qualifications in place of IELTS. To find details of acceptable tests and the required grades, please visit our [English Language Requirements](#) pages.

Exemption from the English language requirement

A Proof of English Language Proficiency (POE) exemption may be offered to you if you meet one of the following criteria:

- Completed at least 3 years of high school in an English-speaking country.
- Completed an International Baccalaureate (IB) Diploma in English.
- Completed an IB diploma in a different language if they obtained a grade of 5 or higher for one of the English courses.
- Completed a higher educational or professional qualification in English.
- Working in an English-speaking environment and demonstrably working in English.

Tips for a strong application

By following these tips and submitting a well-prepared application, you'll increase your chances of being accepted into the programme.

Personal statement: Craft a compelling 300-500 word personal statement or 4-5 minute video presentation that highlights your passion for education leadership, relevant experience, and career aspirations.

References: Choose referees who can speak to your academic abilities, professional experience and potential for success in the programme.

CV/resume: Ensure your CV/resume or LinkedIn profile is up-to-date and showcases your skills and experience.

Got questions?

 [Send us an email](#)

